



Radiolink™ 2.4G

Wireless TV System

With Microphone



Product Code: 924
www.hear4you.com

Contents:

1. Receiver
2. Charging base
3. Transmitter
4. SCART/adapter
5. Power Supply 12V
6. Power adapter 5V USB with cable
7. Headset
8. Audio cables
9. Neck loop
10. Toslink (optical) cable

①



②

③



④



⑥



⑤



⑦



⑨



⑧



⑩



Safety Instructions and Precautions:



● Using this product inappropriately could adversely affect your hearing. Please follow the step-by-step instructions carefully!

● **Persons with pacemakers or other medical devices should always consult their GP/ physician or cardiologist before using the device. Neck loops should not be worn by persons with pacemakers or ICDs (implantable cardioverter defibrillator). Please contact your GP or cardiologist for further information.**

● Underchin headset must be only used by hearing impaired person.

● Listening to uncomfortable sound levels for prolonged periods could adversely affect your hearing.

● If using a microphone, line input, headset or neck loop the plug **MUST** be fully inserted into the correct socket and the volume turned to the lowest level before turning the unit on. Failure to do so can result in high sound levels that could adversely affect your hearing.

- If using a headset or neck loop it **MUST** be fully inserted into the headset socket before turning the unit on. Failure to do so can result in high sound levels that could adversely affect your hearing.
- Do not use in an environment that is damp, wet, very hot or very cold.
- To clean the Echo Radiolink2.4G™ and its accessories use only a soft cloth and an inorganic cleaner.
- Only use the Hearing Products approved mains adapter. Do not use any other type of mains adapter.
- When using this unit, basic safety precautions as below should always be followed to avoid the risk of electrical shock or personal injury.
- Install the unit securely on a stable surface and install the unit where the power cord will not be subject to damage or cause a tripping hazard.
- The unit may get warm when being used. Ensure the unit has adequate ventilation.
- Please refer all servicing to qualified personnel only. Do not attempt to open the unit, this will invalidate the

warranty. Note: if the serial numbers or labels are removed your warranty is invalid.

- The battery must be fully charged before use. It will take about 5 to 7 uses and recharges before the battery is at full capacity.

The Echo RadioLink2.4G™ consists of two main parts:

1. Transmitter
2. Receiver with built in microphone.

The transmitter picks up sound from the TV and this sound is transmitted to the receiver via 2.4GHz signals. The transmitter is mains powered and connection of the transmitter to the TV can be via digital optical or analogue audio out, as the Echo RadioLink2.4G™ is compatible with both methods.

The receiver amplifies the sound sent from the transmitter and sends it to the user via either headphones or a neck loop (with hearing aid on the 'T' setting). The receiver is powered by a built-in rechargeable battery.

Alternatively, receiver can pick up sound using built in microphone. This function is especially useful for conversations. Please press mic button on the receiver to activate built in microphone. Before switching to microphone make sure volume is turned down.

NOTE: The receiver has a range of approx. up to 15 (open field) meters from the transmitter.



Setup

1. Plug the 12V DC power adapter (5) into an electrical power socket. Then plug the power lead into the transmitter (3).
2. Place the transmitter on top of or beside the TV or fix to the side of your TV with the Velcro pad. The transmitter and receiver do not require line of sight.

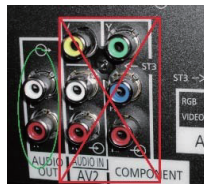
Note: Please keep transmitter as far as possible from other 2.4G devices as routers, cordless phones etc. otherwise it may interfere with those devices.

3. When connecting the transmitter to a TV that has digital optical audio output, use the Toslink cable (10) to connect from the TV digital optical output socket to the Echo RadioLink2.4G™ digital socket (Fig 1).



You may need to change the audio settings on your TV Digital output to **PCM** to be able to watch some HD channels, DVDs, Amazon sticks etc.

4. When connecting to a TV that has analogue audio output sockets, connect the lead (8) to the phono **audio output** sockets on the TV and connect the other end to the line socket on the transmitter (Fig 2).



5. If connecting via SCART socket, attach the SCART adapter (4) to the phono lead (8) (Fig 3).



6. When Transmitter successfully connected to the TV switch Transmitter to ON position (power switch on the back).

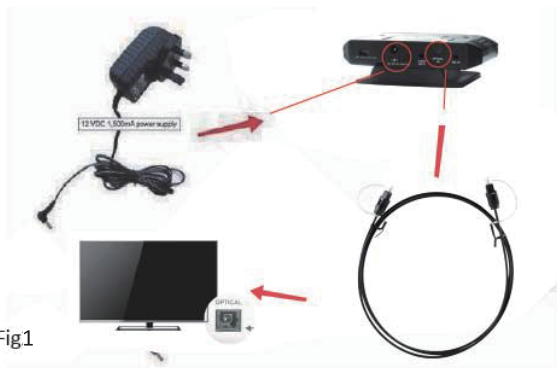


7. Plug the Echo RadioliNK2.4G™ 5V USB DC power adapter (6) into a standard wall socket and then plug its power lead into the socket on the charging base (2). The red power LED on the charger base will light up when power is supplied to the base.
8. Place the receiver into the charging base to charge. The charge LED on the receiver will turn RED and when the batteries are fully charged, the charge LED will turn green.

NOTE: The receiver will only charge until full and cannot be overcharged. A full charge should last up to 25 hours.

9. When fully charged, ensure the volume is at zero, put on the headset (7) or neck loop (9). If you are using the neck loop, set your hearing aids to the “T” setting. Adjust the volume to a comfortable listening level using the yellow on/off volume wheel.
10. Tone can be adjusted via the three-position switch on the side of the receiver.
11. If you wish to amplify environmental sound, simply press microphone button shortly. In this case receiver will switch from TV to the built-in microphone which will amplify any sound picked by the microphone. Please note that this function can be also used out and about to amplify conversation without purchasing separate device.
12. When you are finished using the receiver switch it off and place it back into the charging base.
13. When the receiver is in use and the battery level is low, the ON/OFF LED will flash RED. Then after a few minutes the receiver will automatically turn off to protect the batteries. The receiver must be recharged if this occurs.





Pairing additional/spare receiver only

To pair additional or spare receiver to the existing transmitter please use Pin for pairing (466Pin) provided and follow instruction below:

1. Connect transmitter to the power supply and switch it ON.
2. Remove receiver belt clip by rotating it anticlockwise to get access to pairing button number 2.
3. Switch receiver ON.
4. Using Pin provided press and hold pairing button on the Transmitter (through small hole number 1) for around 2 sec until LED flashes. Transmitter will stay on pairing mode for around 15 seconds.
5. Press and hold receiver pairing button (number 2) for around 3 seconds. This must be pressed when transmitter is on pairing mode (within 15 seconds).
6. Now transmitter and receiver should be paired and ready to use.
7. Please repeat process if not successful.



NOTE: One transmitter can be paired to many receivers. However, one receiver cannot be paired with many transmitters.

Replacement Parts

P/N	Qty	Description
466TX	1	RadioLink™ Transmitter (TX)
466RX	1	RadioLink™ Receiver (RX)
466base	1	Universal Charging Base
570-1011-01	2	12V DC, 0.5A power supply
570-1012-01	1	USB 2A Power Adapter
466Cable	1	USB Cable
306/B	1	Combo lead
209	1	Toslink Cable
101	1	Headset underchin
910-1003-01	1	Echo QR ILoop neck loop
490-1026-01	1	Cartoon box
940-1019-01	1	Instructions
466Pin	1	Pin for pairing
201/B	1	Scart/ phono Plug

Technical Specifications

1	System	2.4GHz ISM Band
2	Carrier frequency	2403MHz-2478
3	Modulation	GFSK
4	Mode	Stereo
5	Transmit power	16dBm(maximum)
6	S/N ratio	85dB
7	Channel separation	80dB(minimum)
8	Distortion	0.5%
9	Frequency response	30 -20,000Hz
10	Power supply of transmitter	DC 12V Positive Centre min0.2A
11	Power supply of receiver	Li-ion rechargeable battery
12	Power supply of charging base	USB 5V min 1A
13	Operating Distance	Approx.50m(Outdoor); Approx.20m(Indoor)

Conformity

Hearing Products International Limited declares that the Echo RadioLink2.4G™ complies with all relevant EU/UK directives.

The full EU/UK declaration of conformance for the Echo RadioLink2.4G™ is available from Hearing Products International Limited.

UK: Waste electrical products and batteries should not be disposed of with household waste. Separate disposal facilities exist, for your nearest facility see www.recycle-more.co.uk or Hearing Products International Limited for full details at www.hear4you.com

Hearing Products International Limited

Echo House, 26/27 Haigh Park, Stockport, SK4 1QR, England

Tel. +44 (0) 161 480 8003

Fax +44 (0) 161 480 8006

Hearing Products International Ltd. reserve sole right to alter prices, design and/ or technical specifications or colours without prior notice.
Radiolink2.4G™ Instructions © Copyright Hearing Products International Limited. E&OE 26/05/2021. Version 1.

www.hear4you.com



Made in China

Printed in China